

BOUNDARY CONSIDERATIONS FOR HIGH GROWTH SITES 2020-2021

Chandler Unified School District
Elementary School Division
February 27, 2019 – May 22, 2019



BOUNDARY REVIEW TARGETS

***GOALS SUPPORT CUSD'S JOURNEY 2025**

- 1. Identify boundary options due to growth along Val Vista Corridor.**
- 2. Provide families transition time and clear timeline for boundary changes.**
- 3. Exhibit fiscally responsible decision making.**
- 4. Proactively address increased enrollment at elementary schools who show projected growth.**
- 5. Based upon current enrollment data, and projected growth identify boundary options to meet the present and future needs.**
- 6. Provide specific programming based on demand of program and location of services.**



PROJECT TIMELINE

TASK	TARGET DATE	STATUS
Develop a process to identify potential sites for projected growth.	Ongoing	In process
Review historic, current and projected enrollment data.	Ongoing	Completed January 2019
Present viable sites to the CUSD Governing Board in a Study Session.	February 27, 2019	Completed February 27, 2019
Hold Community Input meetings at identified sites	April 4, 2019 (Haley) April 8, 2019 (Weinberg) April 9, 2019 (Patterson)	Completed April
Gifted Program Feedback	April 29, 2019 (Ryan)	Scheduled
Update the CUSD Governing Board, inviting public comment	May 8, 2019	Scheduled
Return to the CUSD Governing Board for further discussion	May 22, 2019	Scheduled



BOUNDARY OPTION FEEDBACK

- WHO:

- Assistant Superintendent of Elementary Schools
- Assistant Superintendent of Secondary Schools
- Chief Financial Officer of the District
- Director of Assessment and Research
- District Gifted Specialist
- Site Principals
- Staff
- Community
- Outside Demographer
- Superintendent
- Governing Board

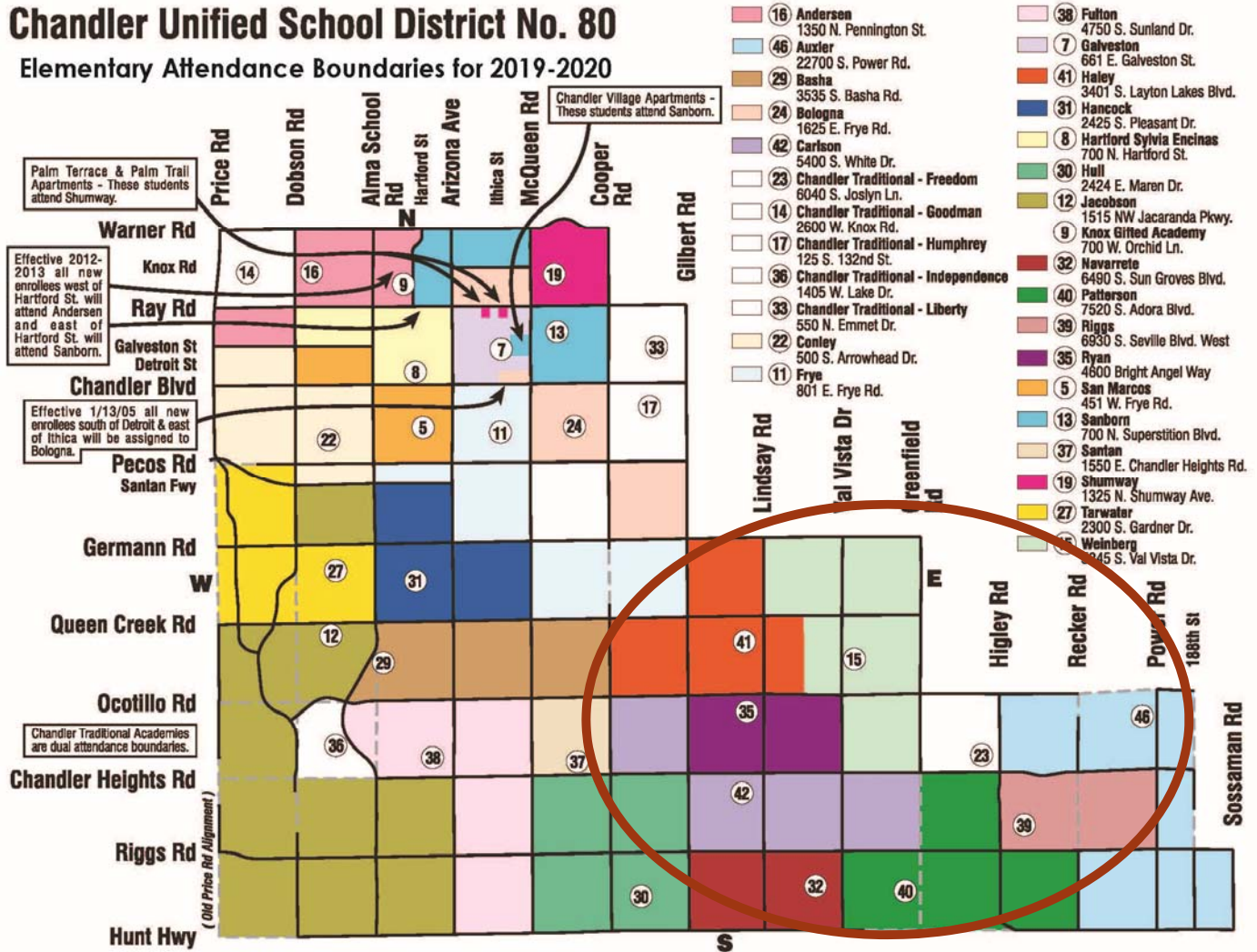
- RESPONSIBILITIES:

- Utilize information provided to guide decision making.
- Communicate information and provide feedback either at the public meetings or through the **dedicated website**.
- Identify additional questions and challenges.
- Work collaboratively to recommend options for consideration by the CUSD Governing Board.



MAP OF SCHOOLS IN STUDY

Chandler Unified School District No. 80 Elementary Attendance Boundaries for 2019-2020



SCHOOL SITES IN STUDY:

- Carlson Elementary
- Haley Elementary
- Patterson Elementary
- Riggs Elementary
- Ryan Elementary
- Weinberg Elementary
- Proposed Elementary School #31



SPECIFIC BOUNDARY DATA WE REVIEW

- **Historical K-6 Enrollment Counts**
- **Projected Enrollment Counts**
- **Average number of school aged (5-17) persons per household is approximately .25**
- **Average number of school aged (5-17) persons per multi-family housing unit is approximately .15**
- **Birth Rates down in Chandler**
- **Home turn-over rate is approximately 9 years**
- **Renters 2-3 years**
- **Trend is to see less students as the community ages out.**

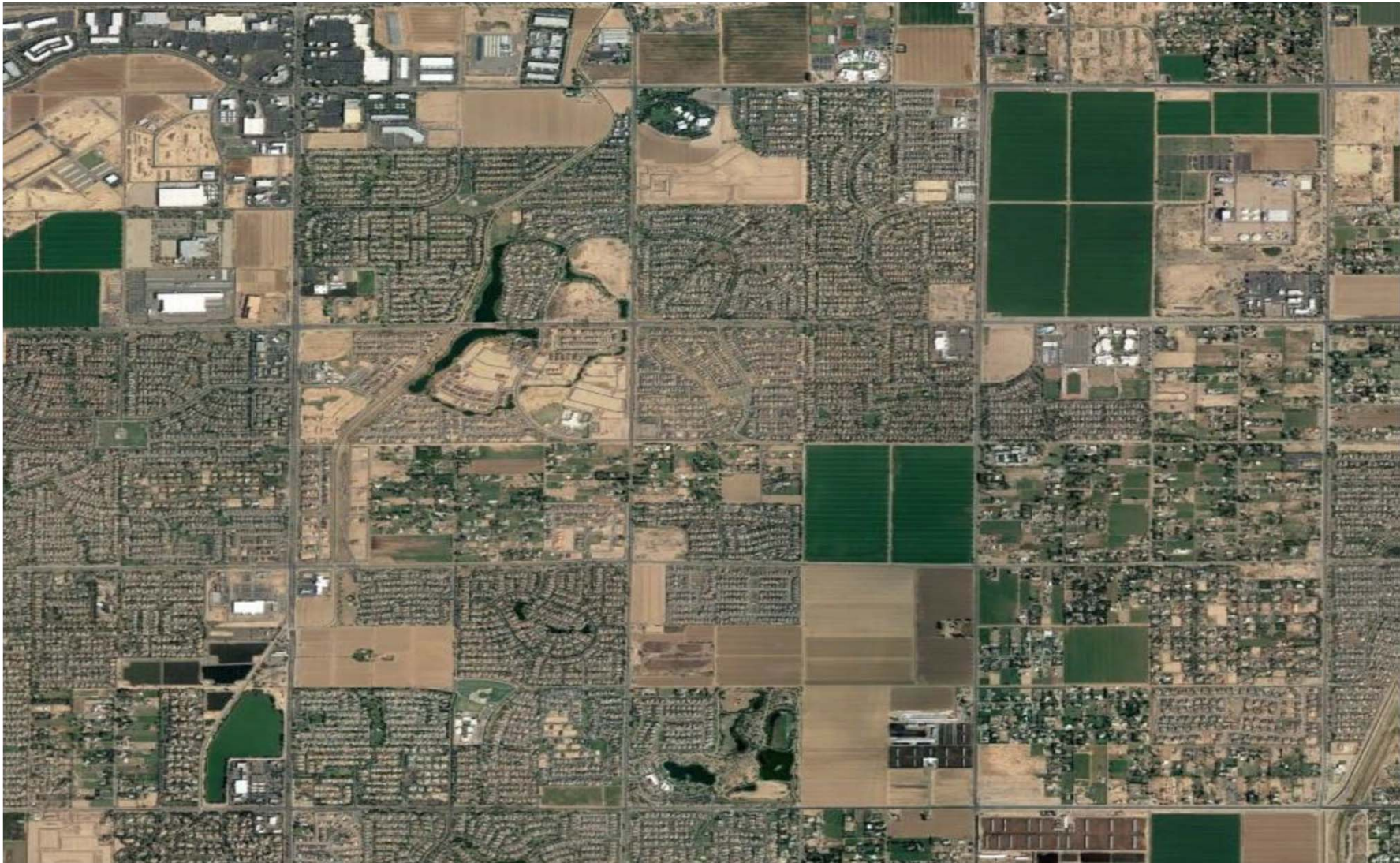


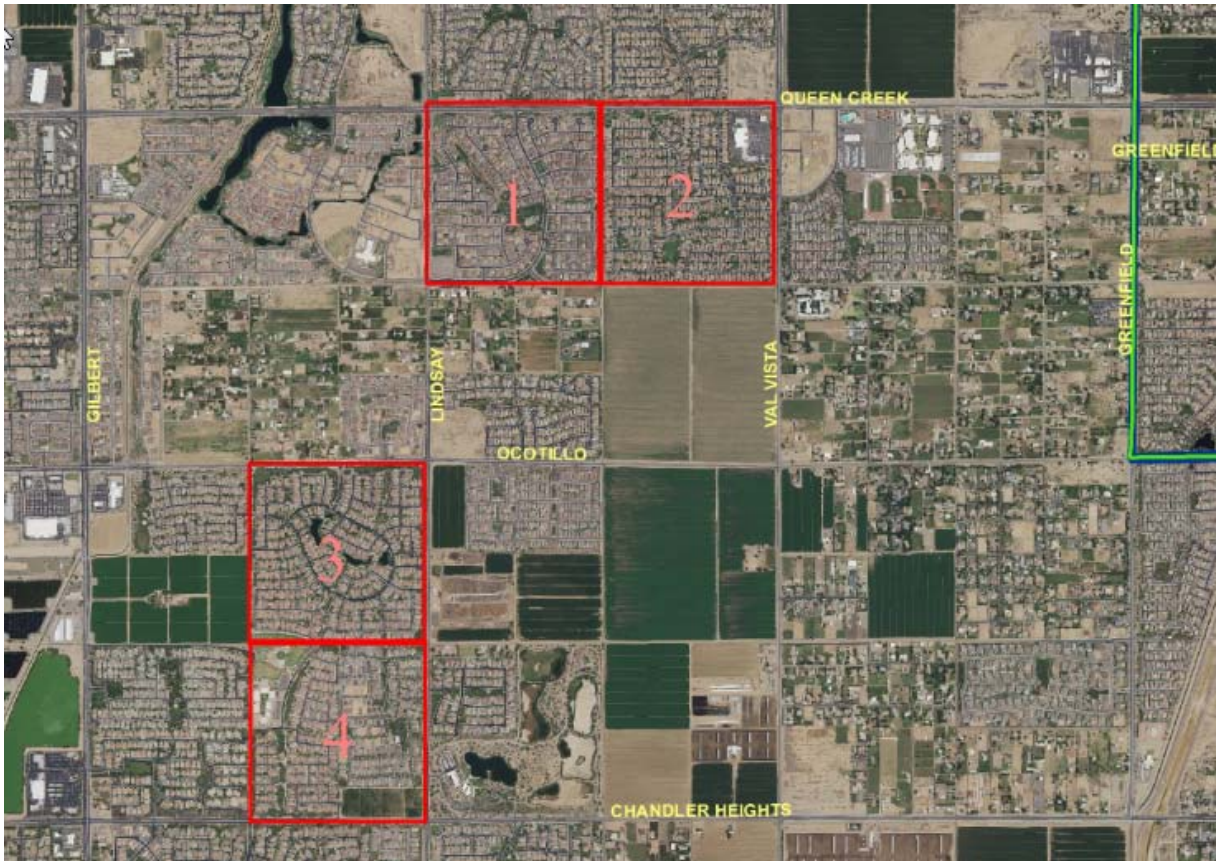
LAND, NEW SCHOOLS, ADDITIONAL SPACE

- **District is 80 square miles**
- **Schools that are/or approaching capacity**
 - **Patterson**
 - **Haley**
 - **Weinberg**
- **Val Vista Corridor Expansion**
 - **1300 plus acres of undeveloped land**
 - **Average of 3 homes per acre**
 - **Approximately 975 new students in the future**

- **Typical land acreages for school sites**
 - **Elementary Site – 12 - 15 acres**
 - **Junior High Site – 25 - 30 acres**
 - **High School sites – 65 - 80 acres**







Chandler Student Generation Survey

Grade	Area 1	Area 2	Area 3	Area 4	Total
PS	1	7	2	2	12
KG	16	28	19	12	75
1	24	22	10	20	76
2	15	22	20	15	72
3	16	30	24	12	82
4	12	20	25	18	75
5	12	18	27	20	77
6	9	31	23	16	79
7	12	19	17	18	66
8	4	30	24	9	67
9	12	29	22	18	81
10	11	26	23	14	74
11	7	31	13	13	64
12	7	27	15	13	62
Total	158	340	264	200	962
K-6	104	171	148	113	536
7-8	16	49	41	27	133
9-12	37	113	73	58	281
Houses	406	440	407	370	1623
Per House:					
Total	0.389	0.773	0.649	0.541	0.593
K-6	0.256	0.389	0.364	0.305	0.330
7-8	0.039	0.111	0.101	0.073	0.082
9-12	0.091	0.257	0.179	0.157	0.173

Source:

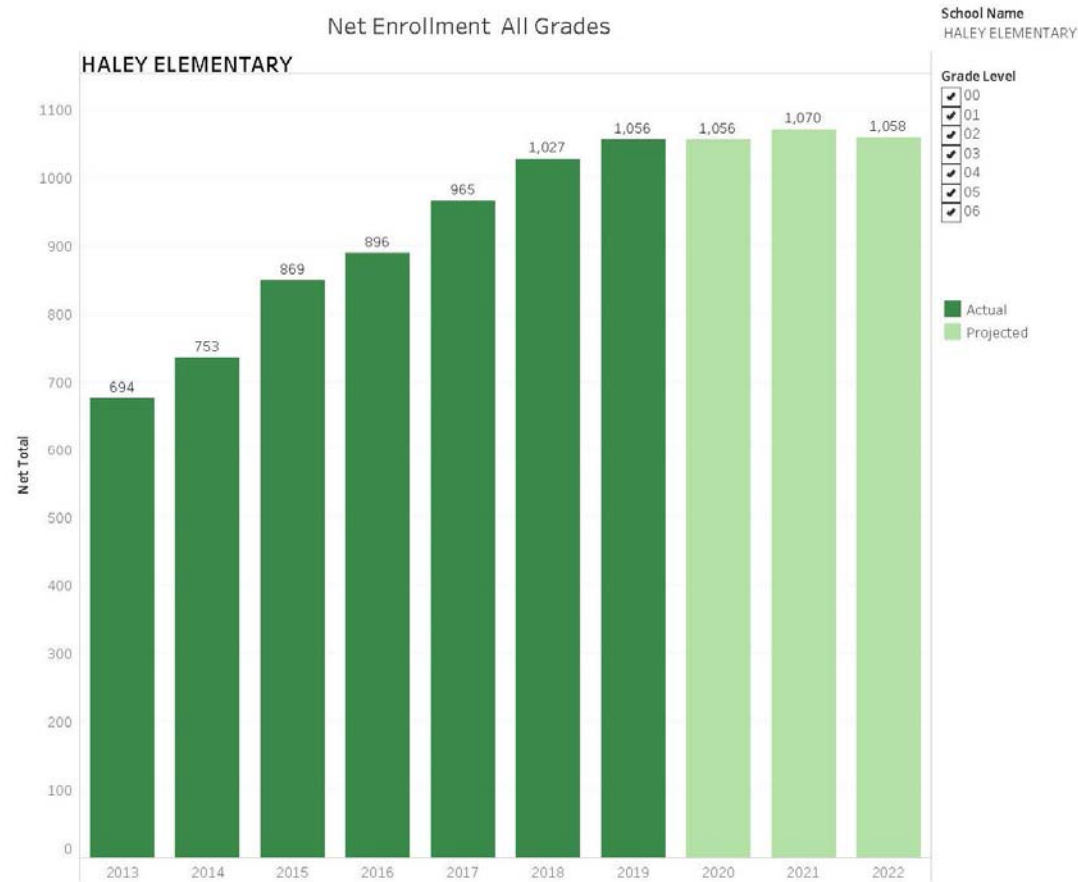
Housing Count, Maricopa Association of Governments, 2018.
 2017/18 Students, Chandler Unified School District, 2018.
 Applied Economics, 2019.



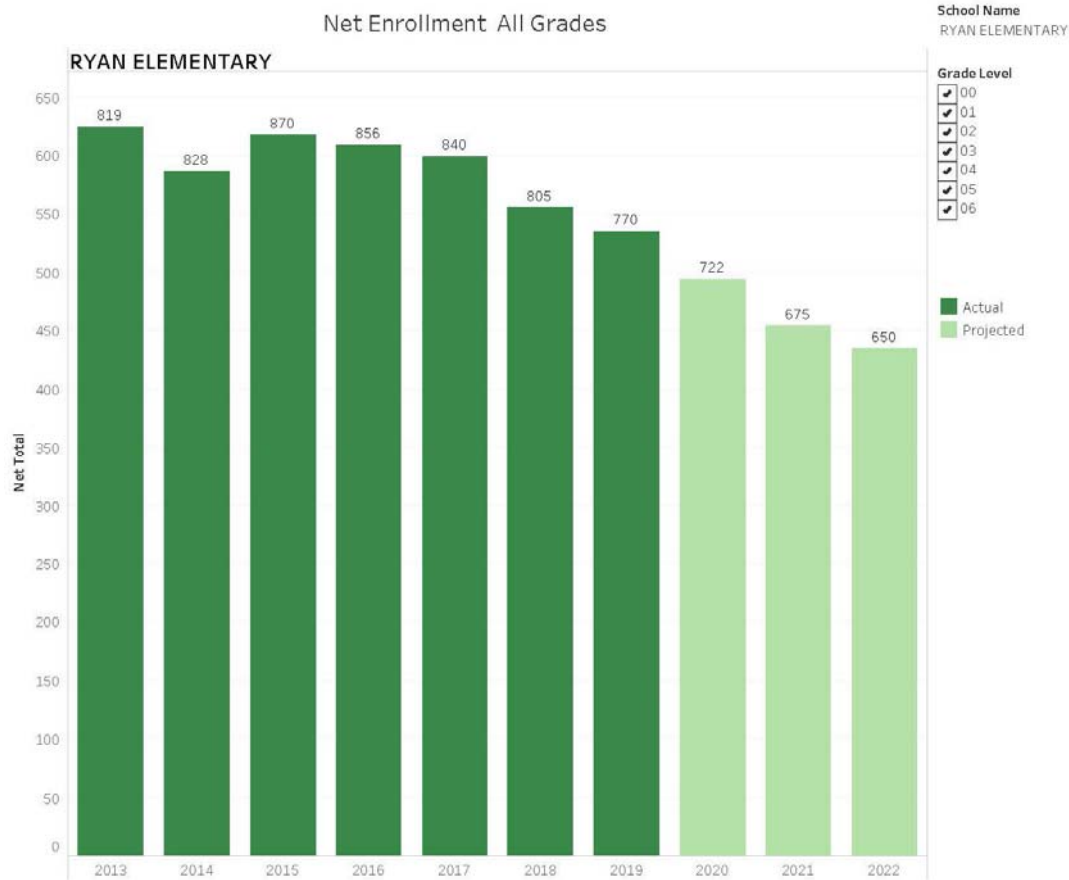
SCHOOL SPECIFIC ENROLLMENT DATA



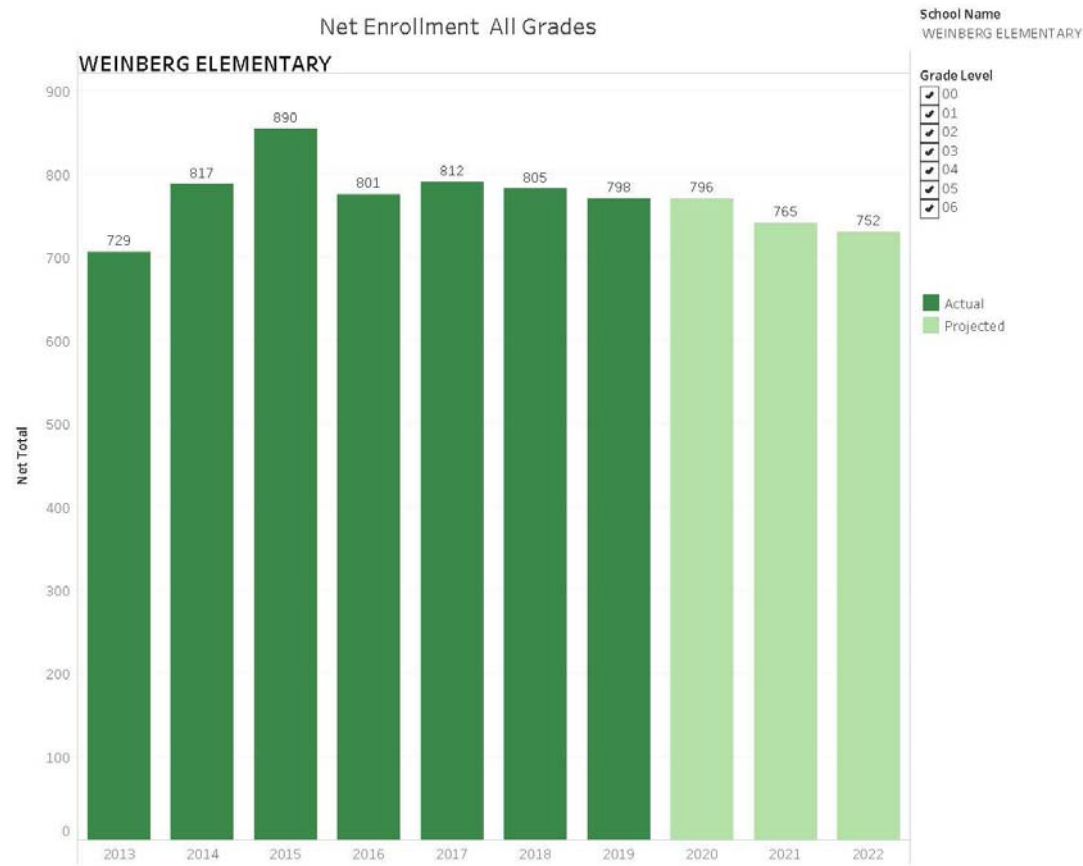
HALEY ELEMENTARY ENROLLMENT DATA



RYAN ELEMENTARY ENROLLMENT DATA

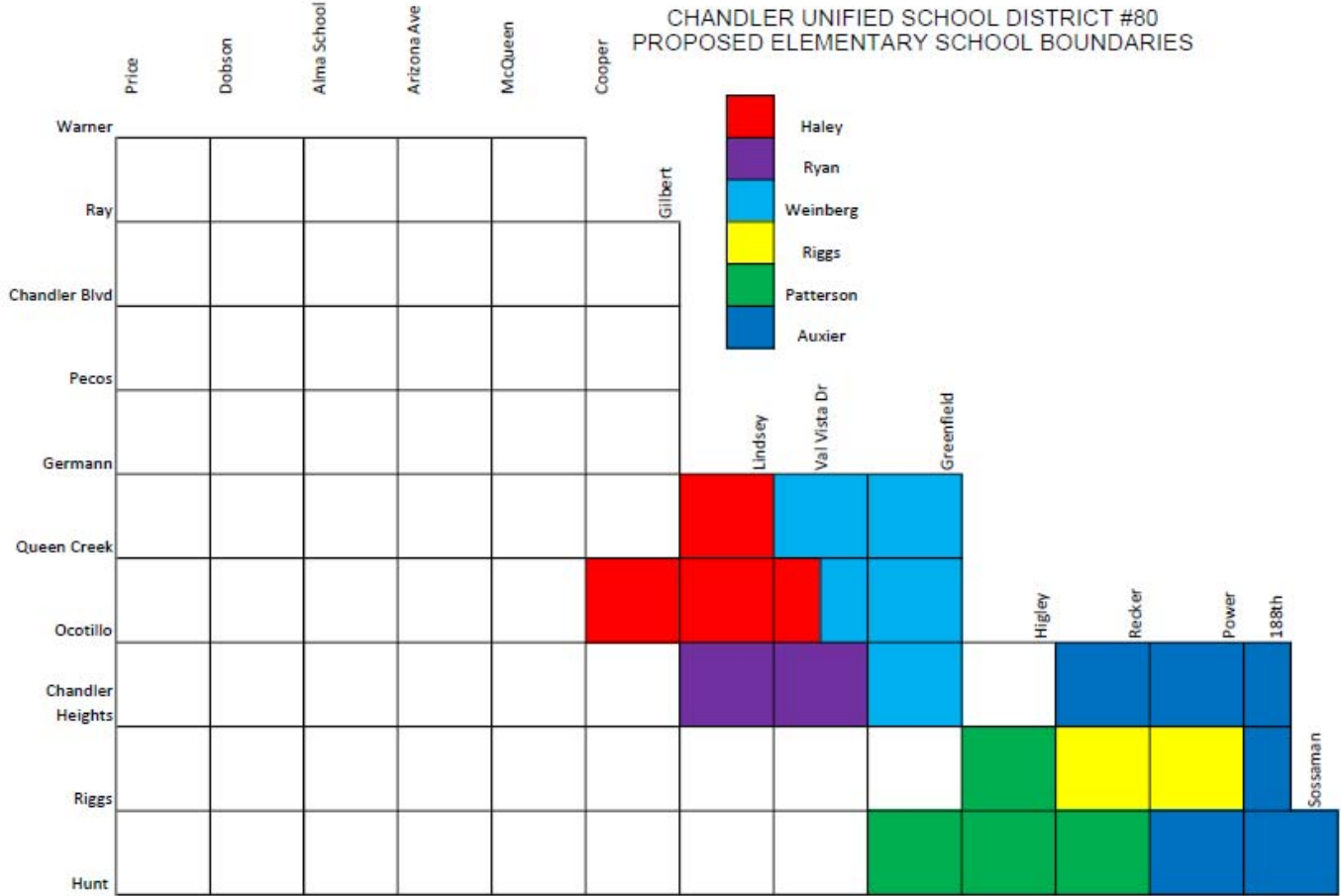


WEINBERG ELEMENTARY ENROLLMENT DATA



OPTION A

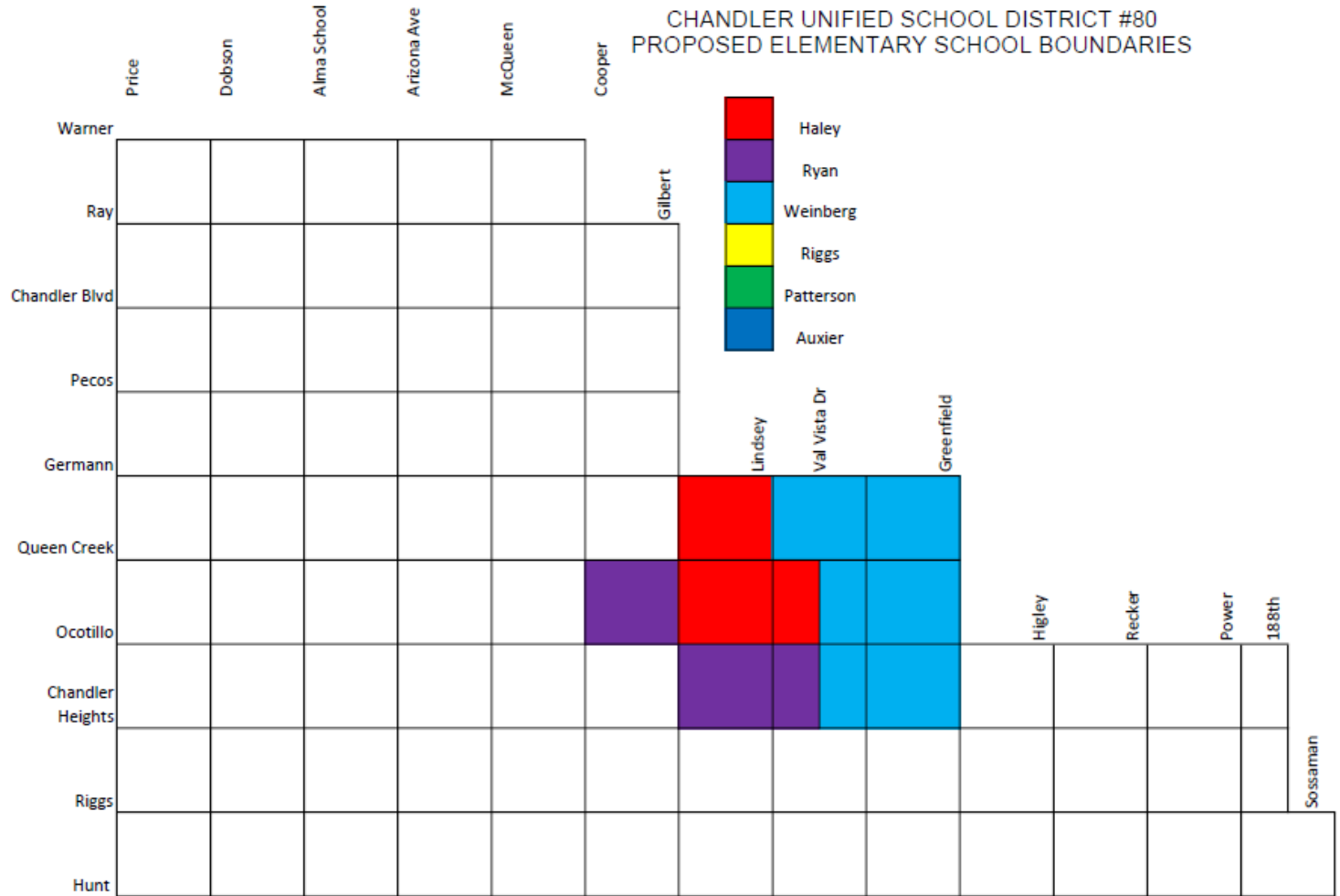
	Haley	1,128
	Ryan	528
	Weinberg	839
	Auxier	707
	Patterson	941
	Riggs	683



OPTION B

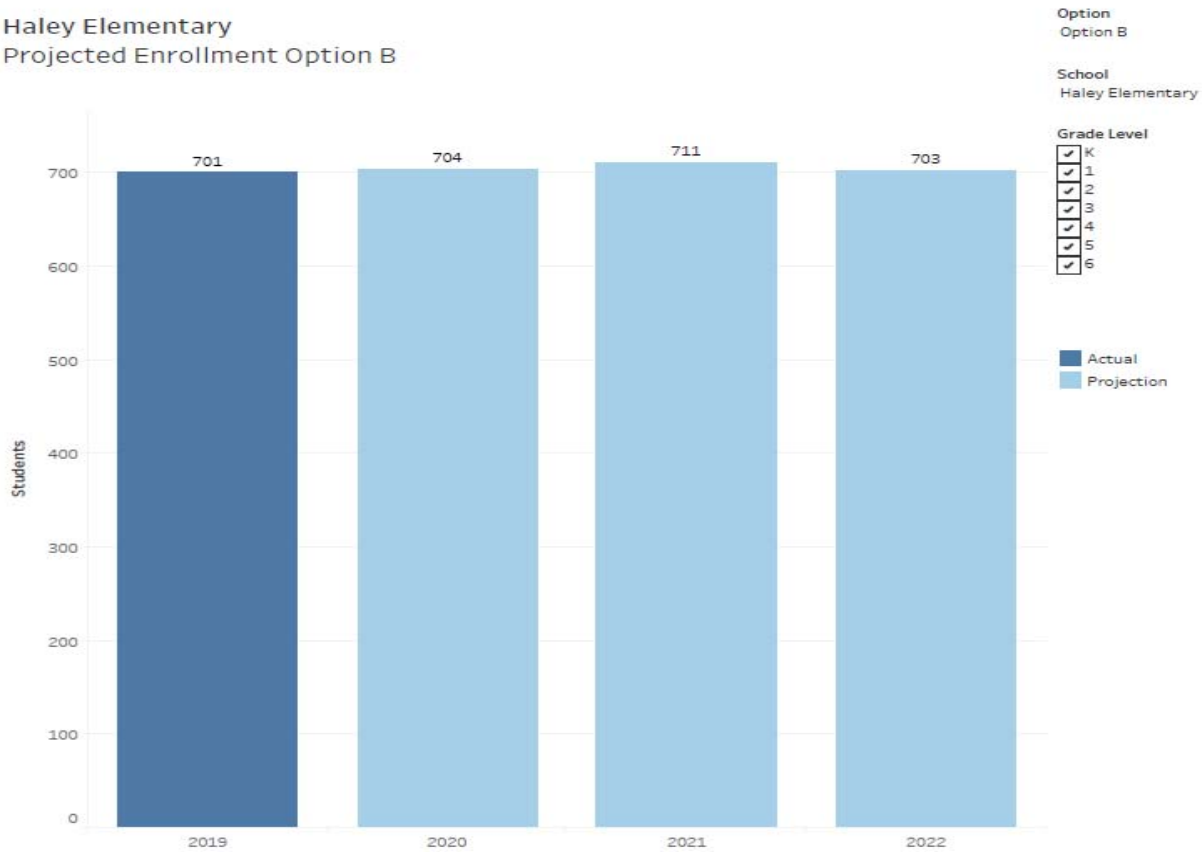
	Haley	701
	Ryan	1,018
	Weinberg	839

CHANDLER UNIFIED SCHOOL DISTRICT #80 PROPOSED ELEMENTARY SCHOOL BOUNDARIES



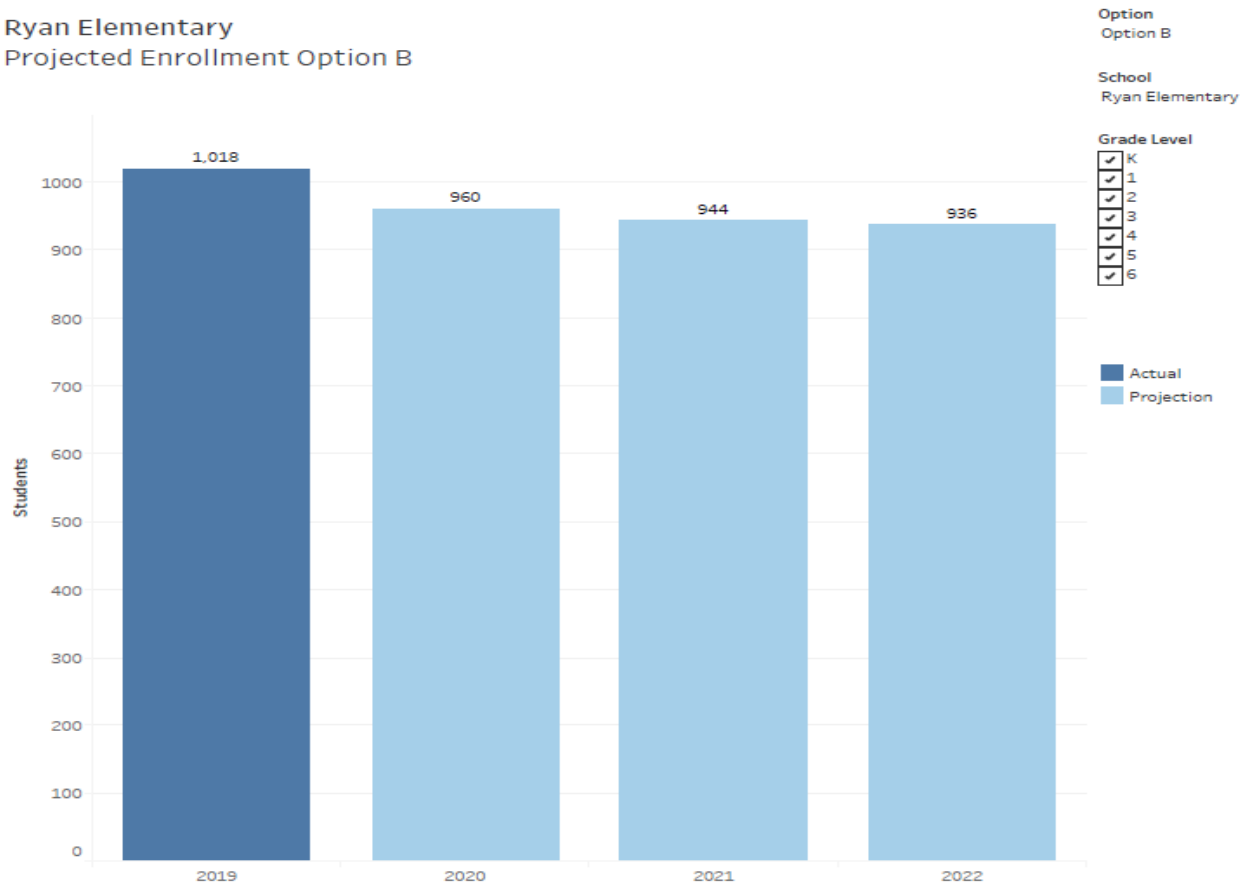
PROJECTION OF ENROLLMENT OPTION B

Haley Elementary
Projected Enrollment Option B



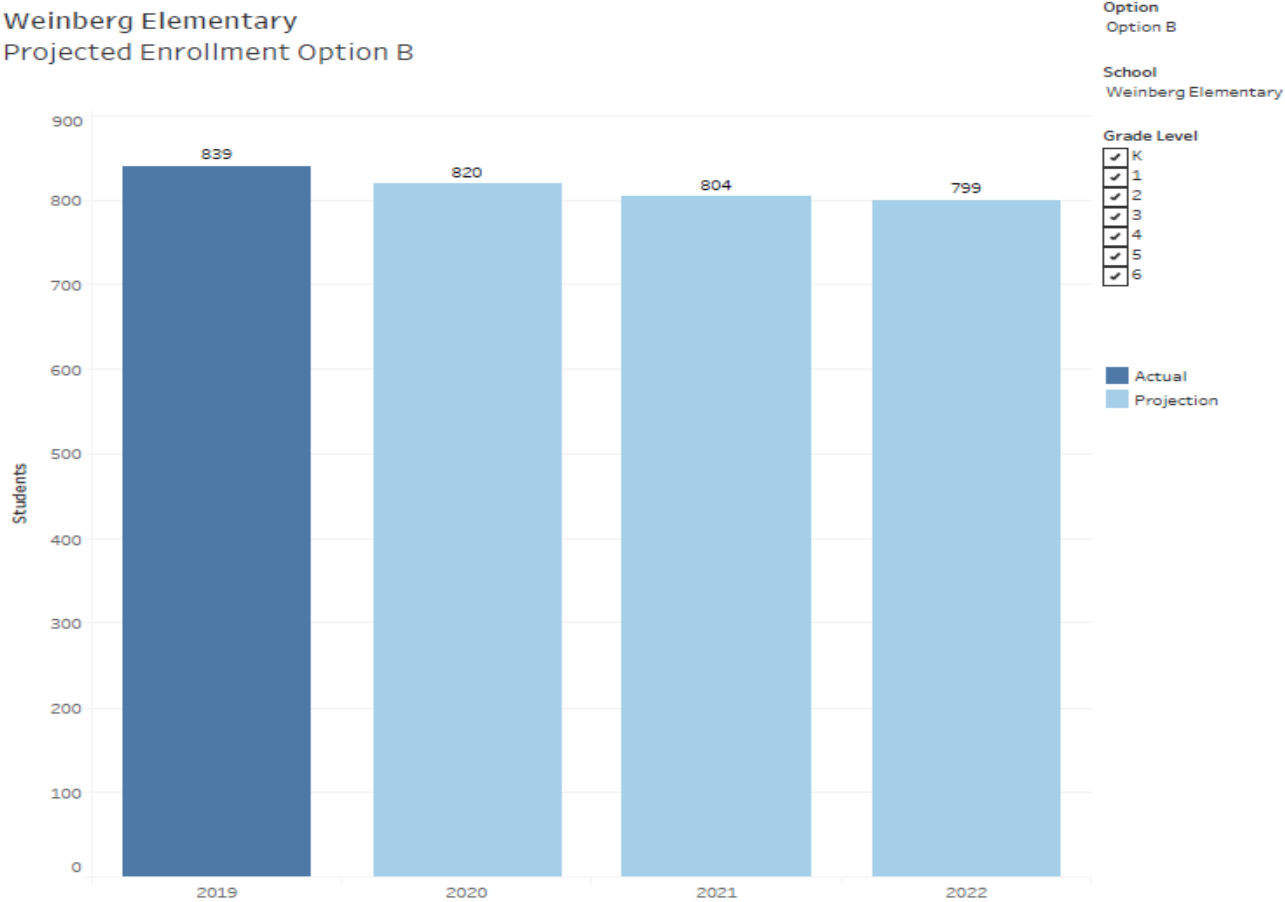
PROJECTION OF ENROLLMENT OPTION B

Ryan Elementary
Projected Enrollment Option B



PROJECTION OF ENROLLMENT OPTION B

Weinberg Elementary
Projected Enrollment Option B

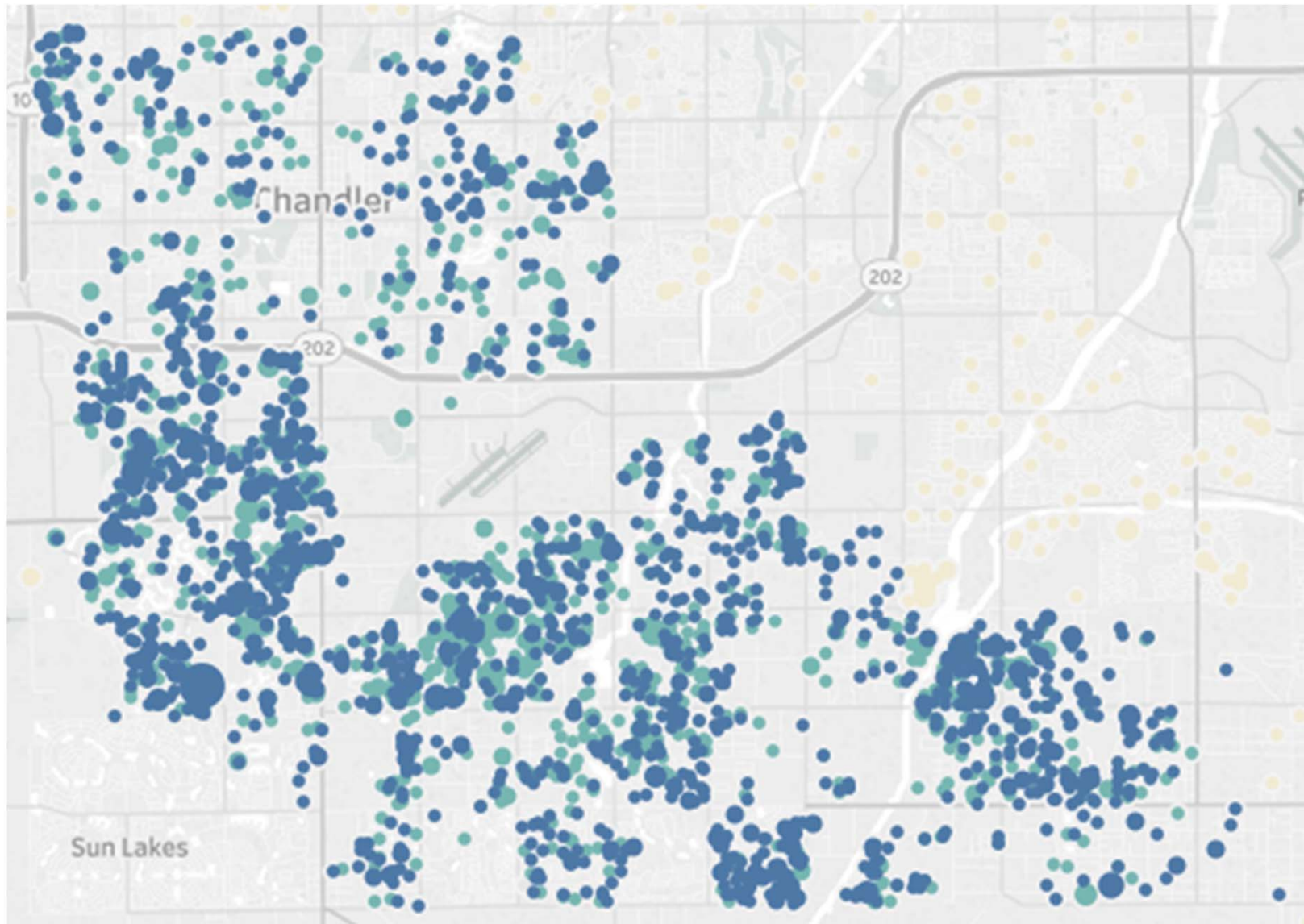


WHY THE EXPANSION OF GIFTED SERVICES?

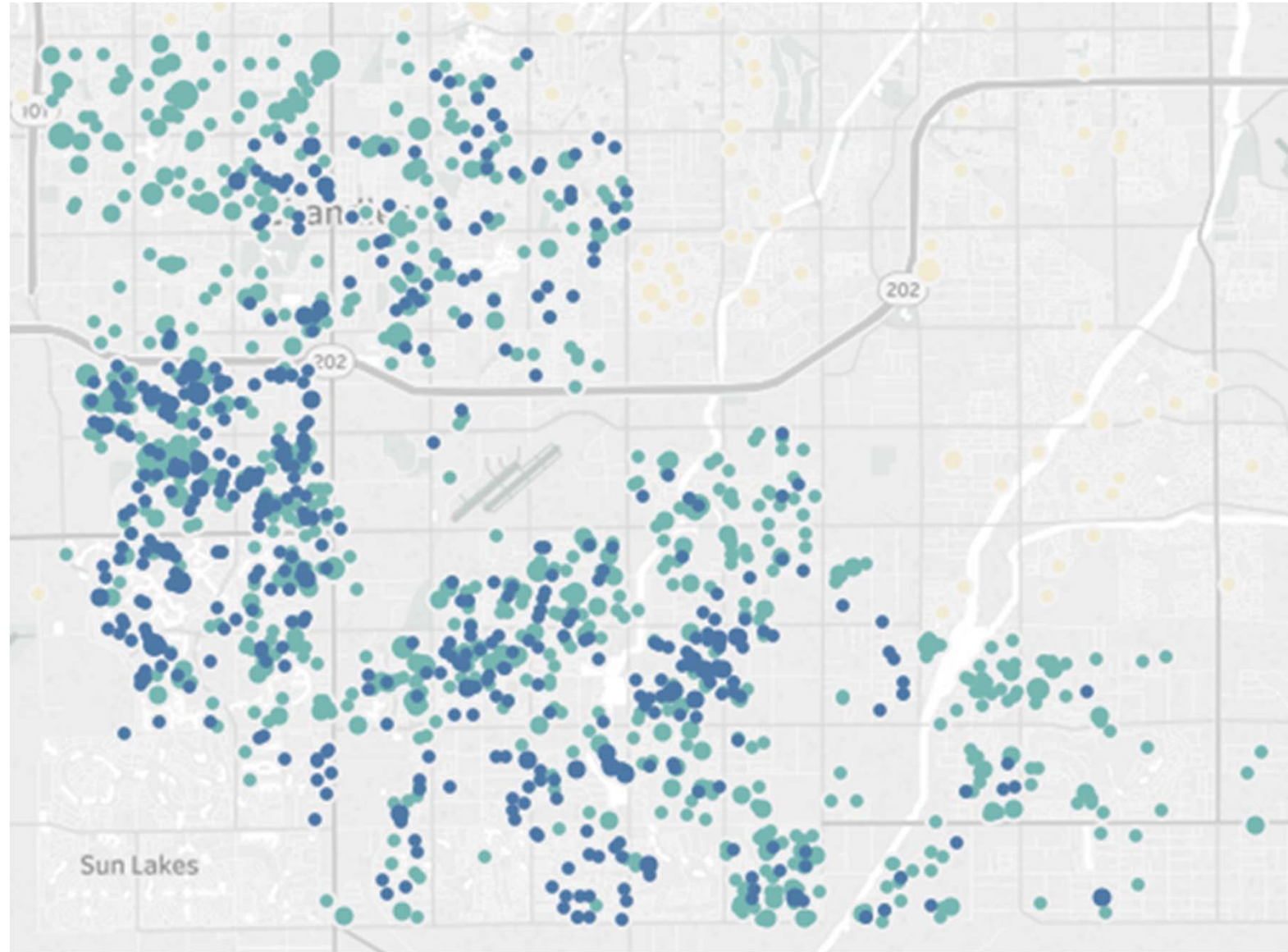
- Gifted Academy Choice option is growing in Chandler Unified School District as evident in the plot map view we showed earlier.
- 2018-2019 - 200 Students Denied Open Enrollment due to Knox Gifted Academy at Capacity.
- Number above does not capture those who have applied for OE in their Kindergarten year and were not accepted. (Cohort Capacity)
- Of the 200 students 17 students enrolled at one of the Gifted Satellite Campuses (low capture rate)
 - Hull
 - Jacobson
 - Ryan
- Students from the region of study are transported by School Bus (Elementary sites as depot) or Parents drive from East to West.



MAP OF STUDENTS ELIGIBLE FOR GIFTED SERVICES



MAP OF STUDENTS ENROLLED IN THE GIFTED PROGRAM



NEED FOR GIFTED SITE LOCATED IN THE SOUTH-EAST PORTION OF THE DISTRICT.

- Knox Gifted Academy – (Repurposed from Knox Elementary School in 2012)

Knox	2010	2011	2012	2013	2014	2015	2016	2017	2018	2019	2020
Kindergarten	84	65	97	23	41	42	44	63	73	81	85
1st	70	77	90	79	45	52	61	67	89	92	95
2nd	85	64	97	88	86	60	69	74	87	115	117
3rd	58	74	112	102	106	77	96	105	99	116	122
4th	58	53	127	108	111	100	99	103	116	109	121
5th	63	46	102	122	103	80	104	113	100	112	106
6th	72	62	47	96	115	76	81	101	103	90	101
Total	490	441	672	618	607	487	554	626	665	715	747
Neighborhood	490	441	454	280	163						
CATS			218	338	444	487	554	626	665	715	747



DISTRICT'S RECOMMENDATION IS TO CONVERT WEINBERG TO A GIFTED ACADEMY:

- Targeted growth could be handled through the new school.
- Weinberg students, staff and community enjoy amenities of a New School.
- Gifted Academy cannot be in location of New School as it would disburse enrollments.
- Centrally located for transportation
 - **Arterial flow – Val Vista Expansion and 202**
 - **Depot locations**
- Although Weinberg was built in 1983 we believe limited construction required to convert to Gifted Academy + equivalent to Knox Gifted Academy.
- CUSD Recognized at State and National level for Gifted Services to Children opportunity to expand on that for both the Gifted Academy and the New School.



SURVEY LINK FOR FEEDBACK

- The gifted feedback survey can be found from the following link: <http://bit.ly/gifted19>
- We value your input and look forward to a continued partnership in your child's education.



THANK YOU
WE WILL BE AVAILABLE TO ANSWER QUESTIONS:

